



Water saving in residential and public buildings



International green building conference, 18<sup>th</sup> Sept. 2008

**WELCOME**  
欢迎

Manfred Koenigslehner  
Technical Director Geberit  
Asia Pacific  
康立熙  
亚太地区技术总监

**Water saving in residential and public buildings**

**Broad product portfolio on two pillars**

	<b>GEBERIT</b> Sanitary systems (55%)				Piping systems (45%)	
Product Areas						
Product Lines	Installation systems (35%)	Cisterns & mechanisms (10%)	Faucets & flushing systems (6%)	Waste fittings & traps (4%)	Building drainage systems (15%)	Supply systems (30%)
Product Families						
	Sales 2007: CHF 2,486.8 million					

International Green building Conference, Shanghai 18/09/2008 / KON 18. September 2008 .2

## Water saving in residential and public buildings

**GEBERIT**

The care for water saving can be seen in the equipment and maintenance of toilets and bathrooms

Examples of non water saving toilets



International Green building Conference, Shanghai 18/09/2008 / KON

18. September 2008 .3

## Water saving in residential and public buildings

**GEBERIT**

The balance between environment and commercial thoughts



**It is often the balance between investment and operation costs**



International Green building Conference, Shanghai 18/09/2008 / KON

18. September 2008 .4

## Water saving in residential and public buildings



Different toilet applications focus on different saving potentials

### Toilet for residential application

- toilet with dual flush function manually operated
- Manual one lever faucets



### Toilet for public application

- Toilet sensor operated with upmost lowest flush quantity, mostly single flush
- Sensor operated urinal flushvalves and washbasin faucets



International Green building Conference, Shanghai 18/09/2008 / KON

18. September 2008 .5

## Water saving in residential and public buildings



Methods to achieve best water saving result

### 3 areas of product requirements



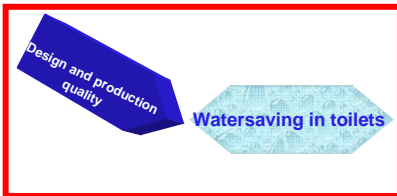
International Green building Conference, Shanghai 18/09/2008 / KON

18. September 2008 .6

## Water saving in residential and public buildings



### Methods to achieve best water saving result



Example: Concealed cistern and filling and flushing valve are designed and produced according the newest methods of product development and production quality



International Green building Conference, Shanghai 18/09/2008 / KON

18. September 2008 .7

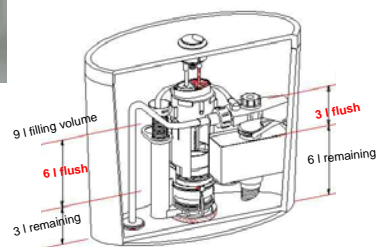
## Water saving in residential and public buildings



### Methods to achieve best water saving result



Example: Dual flush function of Duofix, concealed installation element



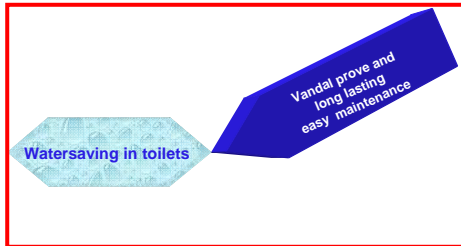
International Green building Conference, Shanghai 18/09/2008 / KON

18. September 2008 .8

## Water saving in residential and public buildings



### Methods to achieve best water saving result



Example: vandal prove function of concealed cistern, urinal flushvalve and wash basin faucet;  
400 kg load ability of Duofix installation element;  
Easy maintenance of valves in concealed cistern



International Green building Conference, Shanghai 18/09/2008 / KON

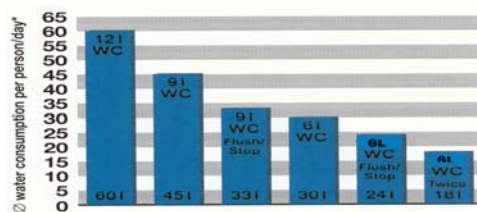
18. September 2008 ,9

## Water saving in residential and public buildings



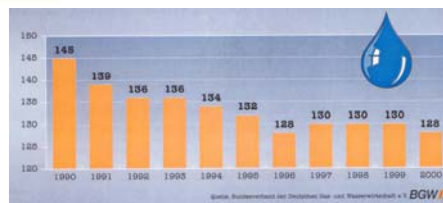
### Water saving potentials

#### Development of water consumption



Water use development in toilet per person and day, depending on flush technology

Average total water consumption development per person and day in Europe



International Green building Conference, Shanghai 18/09/2008 / KON

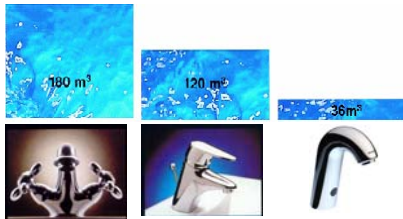
18. September 2008 ,10

Water saving in residential and public buildings

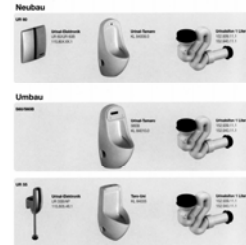


Water saving potentials

Water saving possibilities in public toilets

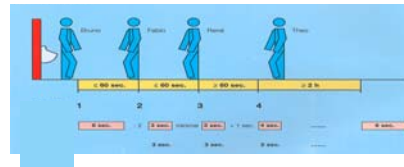


Water consumption development per faucets/year in public WC



Watersaving Urinal traps

Intelligent Urinal flushvalve Control system



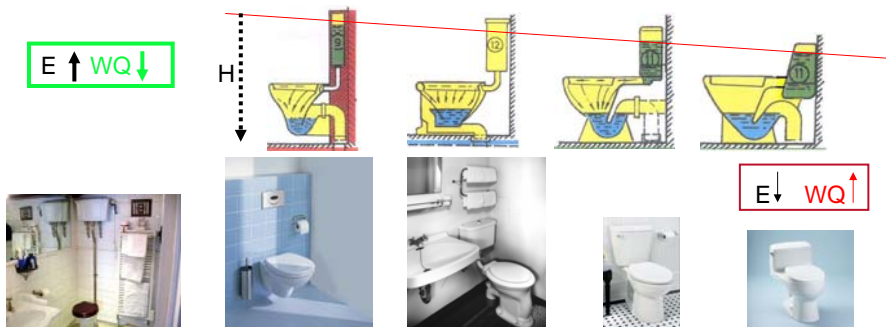
Water saving in residential and public buildings



Water consumption of different toilets in relation to their hydraulic flush energy

**Watersaving potential of Toilet systems**

Flush Energy Level of different Toilets is equal to the cistern heights



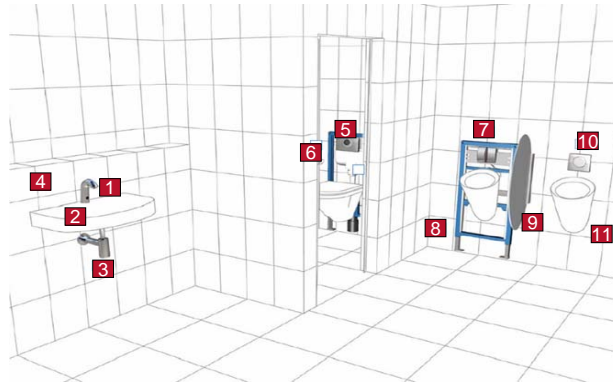
different toilet types need more or less water

## Water saving in residential and public buildings



The assembly of all components achieves optimal water saving results

### Geberit Integrated Solution for Public Bathroom



1. Washbasin faucets
2. Washbasin drain cover
3. Washbasin trap
4. Duofix frame for washbasin
5. Sensor WC
6. Duofix concealed cistern for WC
7. Sensor UR
8. Duofix frame for Urinal
9. Urinal partition wall
10. Pneumatic urinal
11. Urinal trap

International Green building Conference, Shanghai 18/09/2008 / KON

18. September 2008 ,13

## Water saving in residential and public buildings



International green building conference, 18<sup>th</sup> Sept. 2008



**KNOW  
HOW  
INSTALLED**

International Green building Conference, Shanghai 18/09/2008 / KON

18. September 2008 ,14