

Oracle CRM On Demand - MHC Network Express Integration (Dodge Reports): Data Sheet

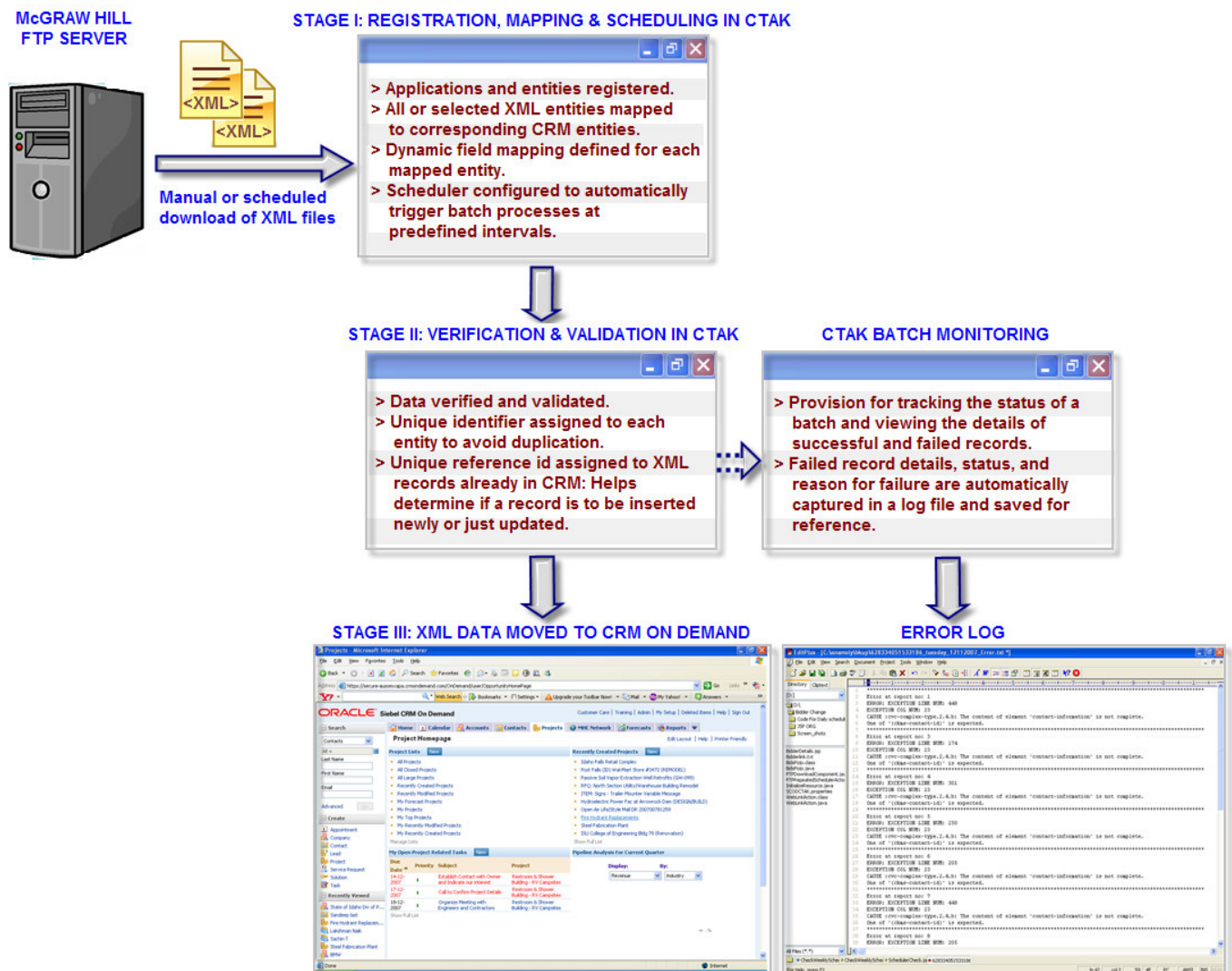
ABOUT CODETHEATRE

CodeTheatre is a leading provider of enterprise solutions and services to global organizations in Banking, Finance, Healthcare, Manufacturing, Telecom and Hi-Tech domains. With a BVQI certification, CodeTheatre employs over a hundred software professionals and has its offices in India, the US, and the UK. For more information, visit www.ctcrmondemand.com.

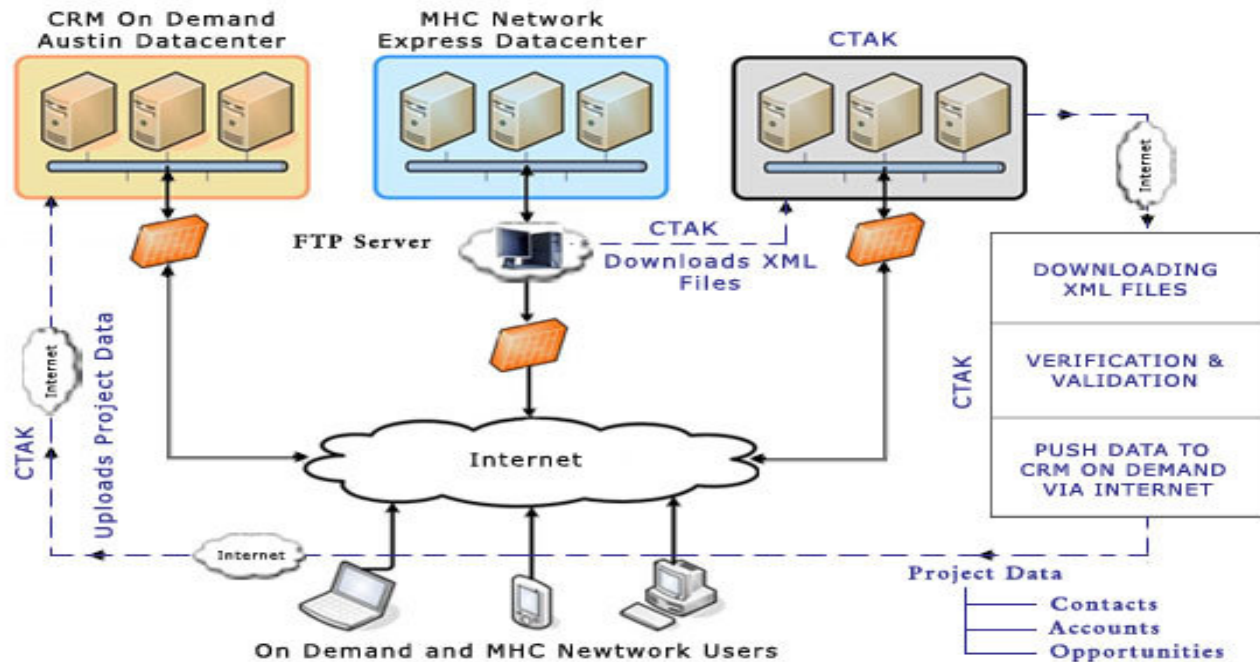
ABOUT McGRAW HILL (MHC)

McGraw-Hill Construction connects people, projects and products across the design and construction industry. From project and product information to industry news, trends and forecasts, MHC provides industry players the tools and resources that help them save time, money, and energy. For more information, visit <http://www.construction.com/>.

INTEGRATION SOLUTION FOR DODGE REPORTS



MCH SOLUTION ARCHITECTURE



BENEFITS OF MCH SOLUTION

- ✓ Periodic updates to projects
- ✓ On-demand project creation
- ✓ Automatic assignment of projects
- ✓ Auto-generation of activity plans
- ✓ Email alerts on project creation and updates
- ✓ Manage project competitors, product revenues, forecasting
- ✓ Track sales stage, status and close dates
- ✓ Access project information from PDAs and handheld devices
- ✓ Access network's project report viewer and company profile
- ✓ Auto-association of project contact and owner account information
- ✓ Email/Document management

KEY FEATURES OF MCH SOLUTION

- ✓ Automated FTP process for document management:
 - Downloads: Scheduled downloads of XML files from FTP site
 - Inbox: Downloaded XML files copied for processing
 - Outbox: Processed XML files
 - Anomaly: XML files containing erroneous data
- ✓ UI to configure parameters for Integration
 - Provides the ability to manage changes/updated to XML
- ✓ Batch Process User Interface
 - Manage schedules
 - Manage/diagnose batch run details
- ✓ Implemented with CKMS keys and de-duplication process
- ✓ Remote administration capabilities

ABOUT CTAK

CTAK enables seamless data integration between Siebel CRM On-Demand and any other ERP, proprietary system, or back-office application.

- ✓ Support for synchronous (real-time) and asynchronous (scheduled) data movement.
- ✓ Provision for uni- and bi-directional data movement.
- ✓ **Internationalization support:** For locale-specific UI and to support porting data in any locale.
- ✓ **Selective mapping:** Map all or selected entities of CRM On Demand.
- ✓ **Job scheduling:** Schedule and automatically trigger entity data movements.
- ✓ **Batch monitoring:** Track the status of a batch.
- ✓ **Automatic error logging:** Details of unprocessed and failed records.
- ✓ **Real-time data access:** Establish a live call with any back-end application and view the desired records.

OUR OFFERINGS

- ✓ *On Demand-MHC Packaged Solution*
 - *MHC Integrated Solution and CRM-On Demand License*
 - Implementation and setup
 - Ongoing maintenance
- ✓ *On Demand-MHC Custom Solution*
 - *MHC Integrated Solution and CRM-On Demand License*
 - Discovery phase
 - Design, implementation and setup
 - Ongoing maintenance
- ✓ *Enterprise Applications (SAP, JD Edwards, etc.) Integrated Solution*
 - *MHC Integrated Solution and CRM-On Demand License*
 - *Enterprise Application Integration with CRM on Demand*
 - Discovery phase
 - Design, implementation and setup
 - Ongoing maintenance

OTHER CTAK SOLUTIONS

CodeTheatre provides end-to-end data integration services leveraging CTAK: analysis, implementation, maintenance, and support. CodeTheatre has several successful middleware integrations to its credit:

- ✓ A leading insurance company in France: Bi-directional data-flow implementation between AS-400 application and Siebel CRM On Demand.
- ✓ A leading provider of GIS information for digital map data and dynamic content: Siebel CRM On Demand integration with SAP for contract management and fulfillment follow up.
- ✓ A large supplier of currency-note paper for major European countries: Integration of a legacy CRM with ERP and data warehouse applications.



CodeTheatre, Inc., 1079 Methven Ct, Herndon, VA 20170 USA

Voice: +1-703-404-4643 | Toll free: +1-866-751-6746 | Facsimile: +1-610-643-6248

Email: sales@codetheatre.com | Web: www.codetheatre.com